

# RadonixPC+

## 3-Axes Position Controller



## RadonixPC+

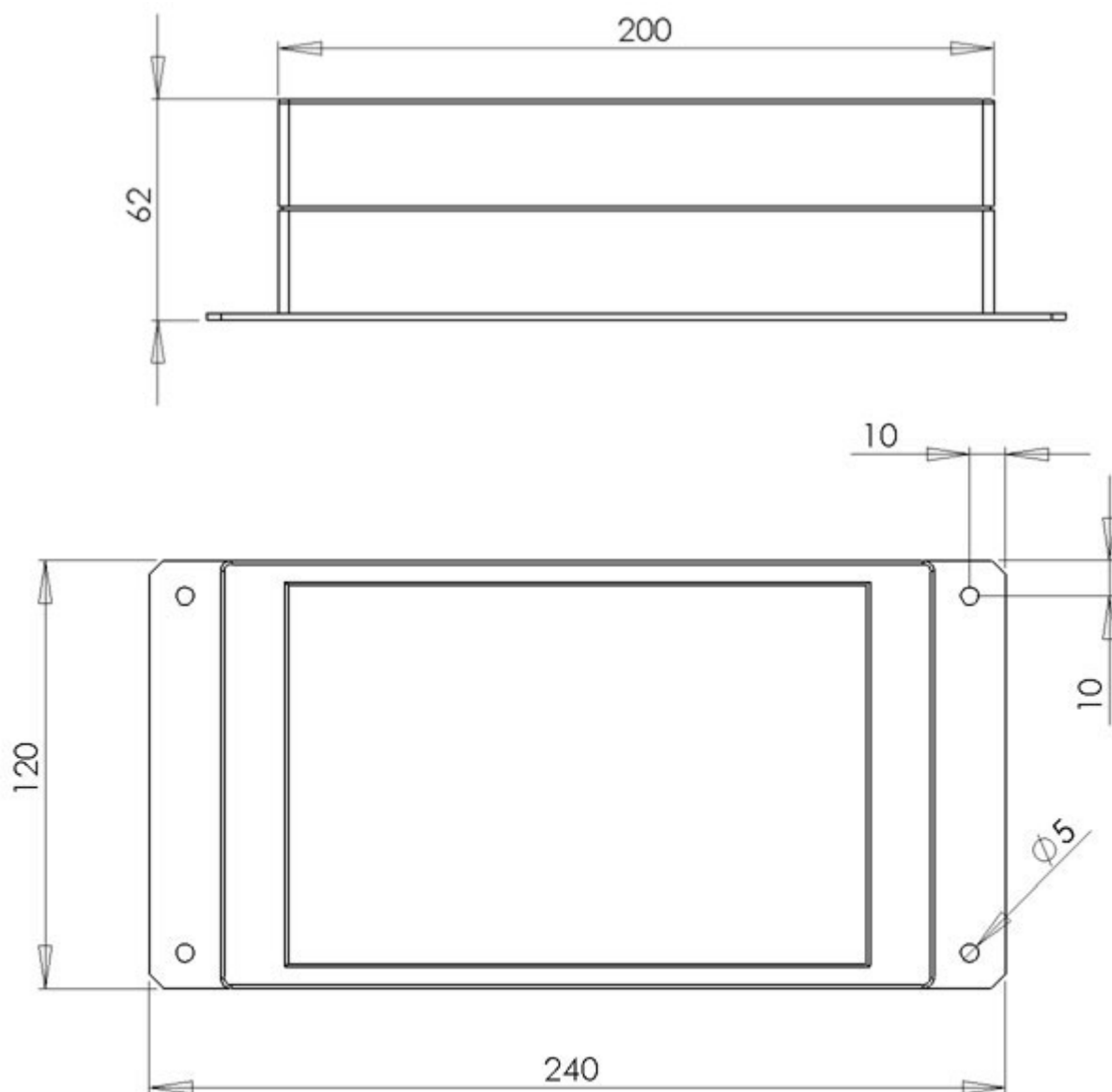
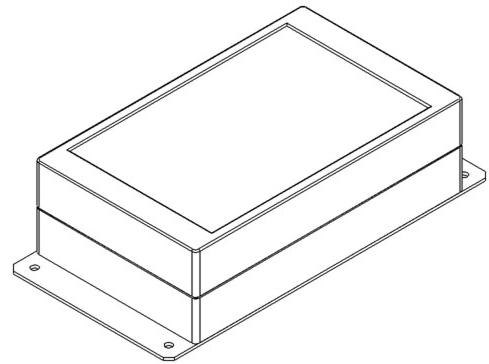
### 3-Axes Position Controller

#### Features

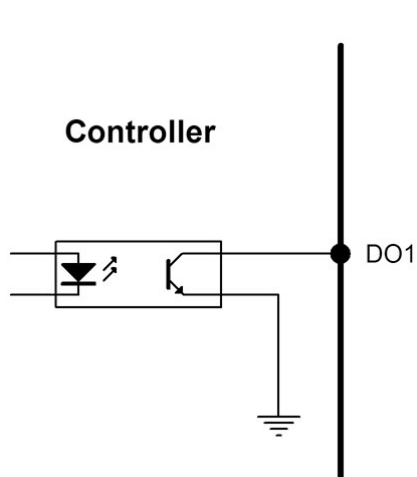
<b>Axes</b>	3 Interpolate axes & 1 Gantry
<b>Digital Input</b>	16 Low active Isolated input pins
<b>Digital Output</b>	8 Open collector high current output pins
<b>Run Direction</b>	Forward and Backward
<b>Pulse Rate</b>	100 kpps
<b>Acceleration Time</b>	50 ms to 5000 ms
<b>Isolator Type</b>	High voltage Optocoupler
<b>Analog Output</b>	An analog output pin
<b>PWM Output</b>	A 25kHz digital PWM output
<b>Motor Type</b>	Servo & Stepper motors
<b>Servo Motor Feedback</b>	Ready feedback and Zero encoder
<b>Connection Type</b>	Plug & Play industrial USB Connection
<b>Output Pulse Type</b>	Line drive Pulse Direction
<b>CNC Type</b>	Router and Cutter CNC compatible
<b>Manual Motion</b>	Jog functions with controllable speed
<b>Control switches</b>	NC Limit switches and Emergency switch
<b>Home switches</b>	NO Home switches with zero encoder detector
<b>Speed Control</b>	Real-time speed control up to 120%
<b>Path Analyzing Method</b>	Recompiling tool path with velocity profile simulator
<b>Hardware Buffer size</b>	400 Blocks internal buffer size
<b>Security</b>	An internal secure administrator code & 7 Condition code
<b>Optional Feature</b>	Wireless remote control with 30 control key
<b>Operation System</b>	Microsoft Windows XP
<b>Platform</b>	.NET Framework 2.0

## Physical Dimension

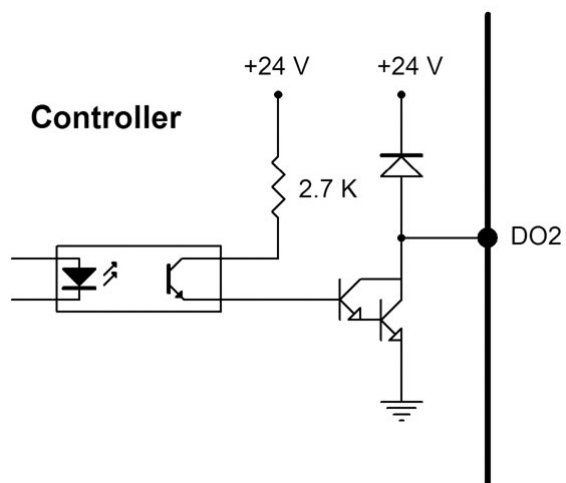
Dimension in millimeter



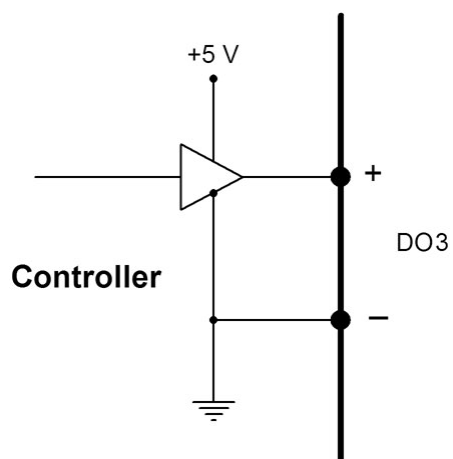
## IO Type



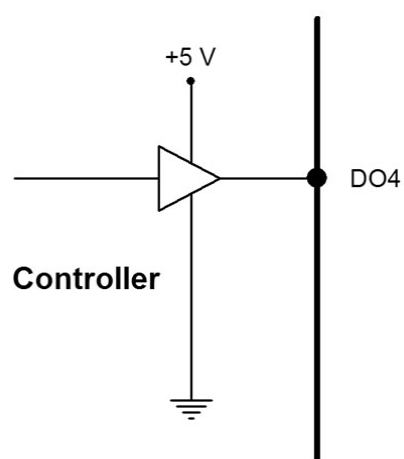
Digital Output Type 1



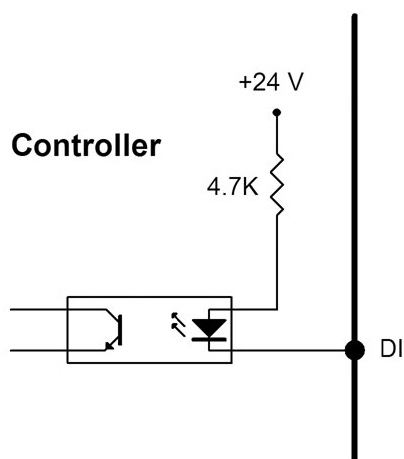
Digital Output Type 2



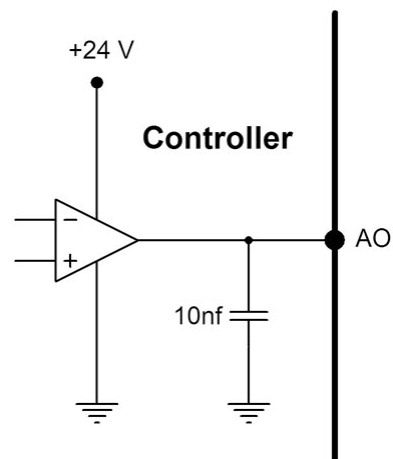
Digital Output Type 3



Digital Output Type 4



Digital Input



Analog Output

Output Type	Phrase	Max Current
Digital Output Type 1	DO1	7 mA
Digital Output Type 2	DO2	400 mA
Digital Output Type 3	DO3	20 mA
Digital Output Type 4	DO4	20 mA
Digital Input	DI	5 mA
Analog Output	AO	20 mA

## Absolute Maximum Ratings

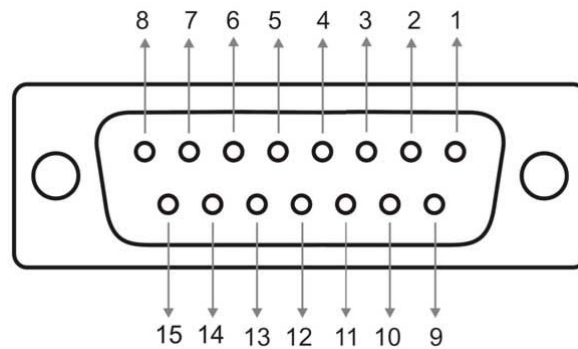
## Green Connectors

Connector	Phrase	Port Type
Power	Power	
Input Port	I1 ... I16	DI
Output Port	O1 ... O8	DO2
PWM Output Port	PWM	DO4
Analog Output Port	Analog	AO

Note:

- 1 – Input Power range is between 12 V to 24 V.
- 2 – Tying incorrect Power pins may damage controller.

## Axes Connection



DB15F Connector

Pin	IO Type	Description
1		VCC +24 v
2	DO3	Direction -
3	DO3	Direction +
4	DO3	Pulse -
5	DO3	Pulse +
6	DO1	Servo On
7	DI	Ready
8	DI	Encoder Zero
9	DO1	Reset Alarm
10		Ground
11		Ground
12		Ground
13		Ground
14		Ground
15		Ground

Note:

1 – Connect Ready pin to Ground if it is not available in your driver.